

SEA-DOO SAR

When you're on a rescue mission, every detail counts. The all-new Sea-Doo® Search and Rescue (SAR) watercraft seamlessly combines the features you need to respond to life threatening situations. It is designed for breathtaking rescue performances, from surf and white water, to flood and other emergency situations. The Sea-Doo SAR excels in rescue missions but is also ideal for evacuation, surveillance and interception. The SAR watercraft truly goes the extra mile. Because when lives are hanging in the balance, every detail counts.



Rescue Sled
Optional, sold separately

RIDER CAPACITY



Weight capacity..... 650 lb / 295 kg

DIMENSIONS

Fuel capacity (Type).....15.9 gal / 60 l (87 octane)
 Length..... 133.4" / 339 cm
 Width..... 66.8" / 170 cm
 Weight (dry).....965 lb / 438 kg
 Storage capacity30.8 gal / 116.6 l

HULL

Type..... SAR
 • Medium sized platform
 • Moderate V hull
 • Outstanding stability
 • Shock and abrasion protection coating

iTC / iBR / CLCS

ENGINE

1503 NA Rotax® 4-TEC® engine..... Provides reliable performance in fresh or salt water, increased torque at low RPM, optimized power at all RPM levels and throttle positions
 Displacement / Intake system 1,494cc / Naturally aspirated
 Cooling Internal heat exchanger improves shallow water capabilities and protects shocks plus the engine cooling loop is closed and isolated from water debris.
 Transmission iBR® with electronic brake, neutral and reverse
 Starter Handlebar-mounted start / stop button
 iTC™ (Intelligent Throttle Control)..... Because the throttle responds to an electric signal instead of a cable, the engine is more precisely calibrated and delivers better fuel economy and lower operating cost.
 D-Sea-Bel™ system Combines a series of resonators and vibration-absorbing components to make Sea-Doo watercraft some of the quietest on the water.

FEATURES

Dual sponsons..... Made of professional grade CSM (Hypalon®), the sponsons offer greater stability and buoyancy.	Sport Mode Sport mode is the SAR default setting. It provides all acceleration needed in emergency situations.
Running boards..... To allow for safe footing on sponsons.	3-up seat Comfortable room for three.
Bumper..... Heavy-duty front bumper.	Elevated fuel filler Easy access and prevents water intrusion while refueling.
Hull coating..... 2.8 mm shock and abrasion protective elastomer coating.	Multifunction Digital Information Center Reports over 20 key operating functions: Fuel level, Time / Distance to empty, Engine Temperature, Tachometer, Speedometer, Hour meter, Compass, Clock, Fuel consumption meter, VTS, F-N-R indicator and more.
Rescue sled attachment system	Off-Throttle Assisted Steering (O.T.A.S.™)..... Provides the operator with additional steering effect in off-throttle situations for greater maneuverability.
Mast..... Carbon fiber rear mast with navigation light.	Pump nozzle for sponsons
Front navigation lights	Tow hook
Shallow water navigation kit Composed of the anti-debris water intake grate, the stainless steel wear ring, the internal heat exchanger and shock-protected cooling system, the SAR significantly improve the PWC shallow water capability.	Footwell carpets
12V output in front storage bin	Wide-angle mirrors
Universal key..... Unlocked system for quick deployment by any rescue team member.	Seat strap
iControl..... The "Brain" that integrates and controls all systems to create the best possible ride.	Rear grab handle
	External exhaust cooling flush attachment
	Operator's guide, instructional video and booklet
	Dual drain plugs
	Fold-down reboarding step
	Emergency floating lanyard
	Bilge pump
	Safety kit

PROPULSION SYSTEM

iBR (Intelligent Brake.....The world's only on-water braking system, iBR lets you stop up to 100 feet sooner than any other watercraft¹. All with the & Reverse) squeeze of a lever. And with its electronic reverse, it gives you a level of maneuverability that makes docking easier.
 Stainless steel impeller..... Delivers improved acceleration, higher top speed and less cavitation.

OPTIONS

Decal kit offered by SCS Unlimited* for coloration customization	Lap timer	Sandbag anchor
Cruise control	Removable dry bag for front storage	Sea-Doo Move trailer
Top / average speed / RPM	Removable storage bin	Storage cover
	Flush kit	Training

WARRANTY

BRP limited warranty covers the watercraft for one year.



DUAL SPONSONS



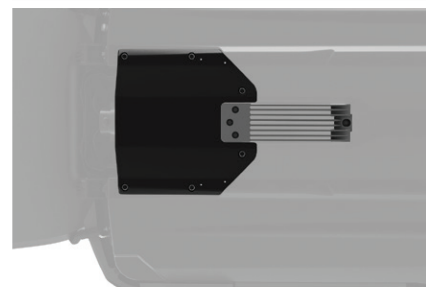
RUNNING BOARDS



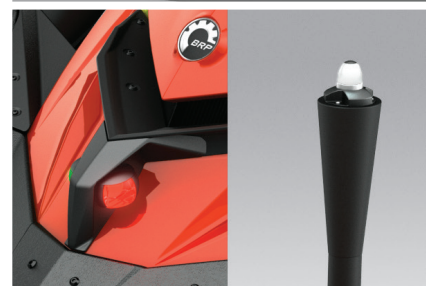
HEAVY-DUTY FRONT BUMPER



HULL PROTECTION COATING



SHALLOW WATER NAVIGATION KIT



NAVIGATION LIGHTS